

# Product Datasheet

www.leinco.com

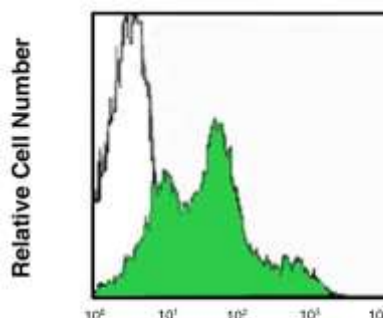


## Anti-Mouse CD3 $\epsilon$ (Clone 500A2)

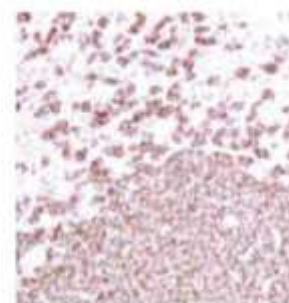
### Purified Monoclonal Antibody

#### Product Information

**Product No.:** C207  
**Clone:** 500A2  
**RRID:** AB\_2829148  
**Isotype:** Syrian Hamster IgG2a  $\kappa$   
**Storage:** Sterile 2-8°C



BALB/c splenocyte staining with 0.25  $\mu$ g of Purified Syrian Hamster IgG Isotype Control (open histogram) and 0.25  $\mu$ g of Purified anti-mouse CD3 $\epsilon$  (clone: 500A2) (green histogram) followed by Anti-Syrian Hamster IgG-FITC.



T lymphocyte staining in frozen mouse spleen. The anti-CD3 $\epsilon$  (Clone 500A2) staining was followed by Anti-Syrian Hamster IgG (H&L)-HRPO (Leinco Prod. No.: S221) and DAB staining with DAB Substrate Kit (Leinco Prod. No.: D100).

#### Product Description

##### Specificity:

Clone 500A2 recognizes an epitope on mouse CD3 $\epsilon$ .

##### Antigen Distribution:

CD3 $\epsilon$  is primarily expressed on mature T cells and NK-T cells and at different levels on differentiation-dependent thymocytes.

##### Background:

CD3 $\epsilon$  is a 20kDa subunit of the TCR complex and is a transmembrane T-cell surface glycoprotein that belongs to the Ig superfamily. It is one of five polypeptide chains that form the TCR complex by associating with the CD3 $\delta$ ,  $\gamma$  and  $\zeta$  chains, in addition to the TCR  $\alpha/\beta$  or  $\gamma/\delta$  chains. CD3 is involved in TCR signaling, enumeration of immunocompetent T-lymphocytes in peripheral blood, and signal transduction during antigen recognition.

##### Known Reactivity Species:

Mouse

##### Format:

Purified

##### Immunogen:

Mouse T-cell receptor

##### Formulation

This purified antibody is formulated in 0.01 M phosphate buffered saline (150 mM NaCl) PBS pH 7.4, 1% BSA and 0.09% sodium azide as a preservative.

##### Storage and Stability

This purified antibody is stable when stored at 2-8°C. **Do not freeze.**

##### Applications

##### Applications and Recommended Usage (Quality Tested By Leinco):

**FC** The suggested concentration for this 500A2 antibody for staining cells in flow cytometry is  $\leq 1.0 \mu$ g per  $10^6$  cells in a volume of 100  $\mu$ l. Titration of the reagent is recommended for optimal performance for each application.

##### Other Applications Reported in Literature:

**IHC (Frozen)** The suggested concentration for this 500A2 antibody in IHC staining on frozen tissue is 2.5 - 10  $\mu$ g per ml. Titration of the reagent is recommended for optimal performance for each application.

**B**

##### Country of Origin

USA

##### References

Havran, W. M. *et al.* (1987) *Nature* **330**:170

Allison, J. W. *et al.* (1988) *The T-Cell Receptor* **33**

Products are for research use only. Not for use in diagnostic or therapeutic procedures.

410 Axminister Dr, St. Louis, MO 63026

(800) 538-1145

leincoglobal@leinco.com