

Product Datasheet

www.leinco.com



Anti-Mouse CD279 (PD-1) (Clone 29F.1A12)

Purified Monoclonal Antibody

Product Information

Product No.: P383
Clone: 29F.1A12
RRID: AB_2831656
Isotype: Rat IgG2a κ
Storage: Sterile 2-8°C

Product Description

Specificity:

Clone 29F.1A12 recognizes an epitope on mouse PD-1.

Antigen Distribution:

PD-1 is expressed on a subset of CD4-CD8- thymocytes, and on activated T and B cells.

Background:

PD-1 is a 50-55 kD member of the B7 Ig superfamily. PD-1 is also a member of the extended CD28/CTLA-4 family of T cell regulators and is suspected to play a role in lymphocyte clonal selection and peripheral tolerance. The ligands of PD-1 are PD-L1 and PD-L2, and are also members of the B7 Ig superfamily. PD-1 and its ligands negatively regulate immune responses. PD-L1, or B7-Homolog 1, is a 40 kD type I transmembrane protein that has been reported to costimulate T cell growth and cytokine production. The interaction of PD-1 with its ligand PD-L1 is critical in the inhibition of T cell responses that include T cell proliferation and cytokine production. PD-L1 has increased expression in several cancers. Inhibition of the interaction between PD-1 and PD-L1 can serve as an immune checkpoint blockade by improving T-cell responses in vitro and mediating preclinical antitumor activity. Within the field of checkpoint inhibition, combination therapy using anti-PD1 in conjunction with anti-CTLA4 has significant therapeutic potential for tumor treatments. PD-L2 is a 25 kD type I transmembrane ligand of PD-1. Via PD-1, PD-L2 can serve as a co-inhibitor of T cell functions. Regulation of T cell responses, including enhanced T cell proliferation and cytokine production, can result from mAbs that block the PD-L2 and PD-1 interaction.

Known Reactivity Species:

Mouse

Format:

Purified

Immunogen:

PD-1 cDNA followed by PD-1-Ig fusion protein

Formulation

This purified antibody is formulated in 0.01 M phosphate buffered saline (150 mM NaCl) PBS pH 7.4, 1% BSA and 0.09% sodium azide as a preservative.

Storage and Stability

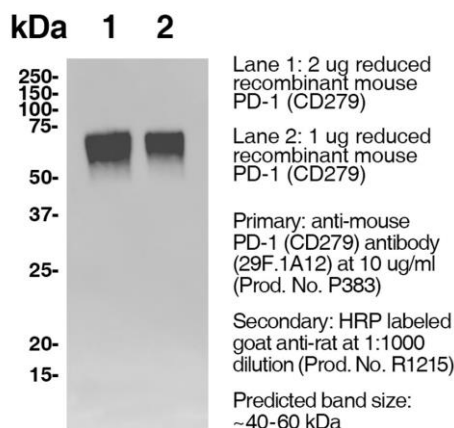
This purified antibody is stable when stored at 2-8°C. **Do not freeze.**

Country of Origin

USA

References

- 1.) Ardolino, M. *et al.* (2018) *J Clin Invest.* **128**(10):4654-4668. [PubMed](#)
- 2.) Schreiber, RD. *et al.* (2017) *Cancer Immunol Res.* **5**(2):106-117.



Products are for research use only. Not for use in diagnostic or therapeutic procedures.

410 Axminister Dr, St. Louis, MO 63026

(800) 538-1145

leincoglobal@leinco.com

Product Datasheet

www.leinco.com



3.) Honjo, T. *et al.* (1992) *EMBO J.* **11**:3887.

4.) Wurster S. *et al.* (2020) *The Journal of Infectious Diseases* **222**(6):1989–994 [Journal Link](#)

5.) Lo, R. *et al.* (2021) *Cancer Cell* **39**(10):1375-1387.e6 [Journal Link](#)

Products are for research use only. Not for use in diagnostic or therapeutic procedures.

410 Axminister Dr, St. Louis, MO 63026

(800) 538-1145

leincoglobal@leinco.com