

# Purified *In vivo* Grade Antibodies

Leinco's GOLD™ & PLATINUM™ Purity Standards

Leinco Technologies has developed proprietary methods for manufacturing *In vivo* functional grade antibodies with the highest purity standards in the industry. Leinco's *In vivo* Platinum™ antibodies have the most stringent quality specifications for purity, endotoxins, aggregates and leachable protein A. Each antibody is available in custom concentrations and package sizes. *In vivo* Platinum™ antibodies are also pathogen free and tested by the IDEXX Impact I PCR mouse pathogen profile.

**GOLD™**



- Purity, > 95%
- Endotoxin, ≤ 1.0 EU/mg
- Contains no preservatives or carrier proteins
- Sterile PBS Ph 7.2 - No K or Ca
- For highly sensitive assays where large amounts of antibody are needed.

**PLATINUM™**

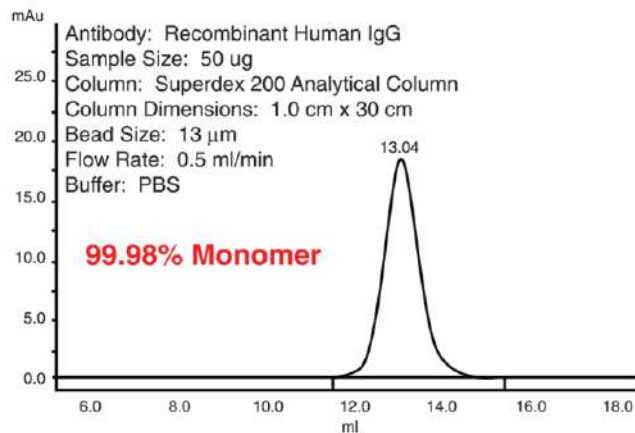


- Purity, > 98%
- Very low endotoxin, ≤ .05 EU/mg
- Contains no preservatives or carrier proteins
- Sterile PBS Ph 7.2 - No K or Ca
- Ultra-low levels of leached protein A
- Pathogen tested. (IMPACT1)

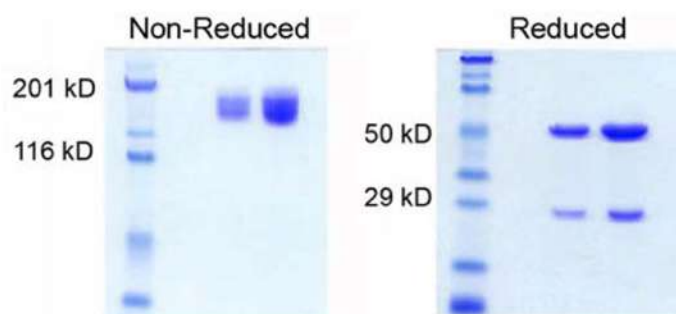
## IDEXX IMPACT I (PCR-based) Mouse Pathogen Profile

<i>Mycoplasma spp.</i>	Mouse adenovirus (MAV1, MAV2)	Mouse kidney parvovirus (MKPV)
<i>Mycoplasma pulmonis</i>	Murine norovirus (MNV)	Hantaan virus
Sendai virus	Reovirus 3 (REO3)	Mouse cytomegalovirus (MCMV)
Mouse hepatitis virus (MHV)	Mouse rotavirus	K virus
Pneumonia virus of mice (PVM)	Ectromelia virus	Mouse thymic virus (MTV)
Minute virus of mice (MVM)	Lymphocytic choriomeningitis virus	<i>Corynebacterium bovis</i>
Mouse parvovirus (MPV1-5)	Polyomavirus	<i>Corynebacterium spp.</i>
Theiler's murine encephalomyelitis (TMEV)	Lactate dehydrogenase-elevating virus (LDEV)	

## Determination of Percentage Aggregates Using Analytical Size Exclusion Chromatography



## Determination of Purity by SDS-PAGE



# Purified Bulk *In vivo* Grade Antibodies

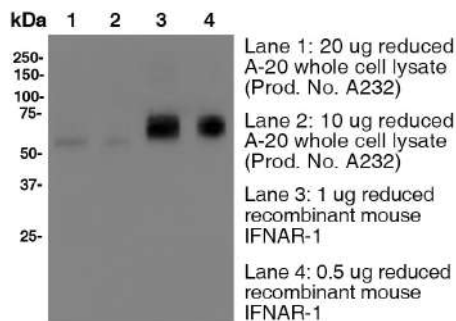
Isotype Controls	Host Species	Clone
IgG1 Isotype Control	Human	MOPC21
IgG Isotype Control	Armenian Hamster	PIP
IgG1 Isotype Control	Mouse, Rat	HKSP, HKSP84, GL113
IgG2a Isotype Control	Mouse, Rat	C1.18.4, 1-1
IgG2b Isotype Control	Mouse, Rat	MPC-11, 1-2
IgG3 Isotype Control	Mouse	MG3-35

Antigen	Reactivity	Clone	Applications
4-1BB (CD137)	Mouse	3H3	Costim
B220 (CD45R)	Mouse	RA3-6B2	Depletion
CD11a	Human	38	FC, IF, IHC-F, IP
CD11a (LFA-1a)	Mouse	FD441.8	N
CD11a (LFA-1a)	Mouse	I21/7	FC, FA
CD11b	Mouse/Human	M1/70	FC, N
CD11b	Human	ICRF44	FC, B, IHC, IF, CyTOF
CD11c	Human	3.9	FC, B, IHC, CyTOF
CD11c	Mouse	N418	FC, IP, IHC, CyTOF
CD120a (TNFR1)	Mouse	55R-170	FC, B, ELISA, IP
CD120a (TNFR1)	Mouse	55R-593	FC, B, IP
CD14	Human	UCHM-1	FC, WB
CD151	Human	50-6	FC, B, ICC, WB, CyTOF
CD155 (PVR)	Mouse	4.24	FC
CD16/32	Mouse	2.4G2	B
CD172a	Mouse	P84	FC, B IHC FF, IP
CD178 (FasL)	Mouse	MFL3	FC, B IHC FFPE, FA
CD18	Mouse	C71/16	FC
CD19	Mouse	1D3	FC, Depletion, N
CD2	Human	G11	FC, Costim, IHC FFPE, WB
CD20	Human/Monkey	2H7	FC, Depletion, IHC FF, IP
CD209b (SIGN-R1)	Mouse	22D1	FC, B, IHC FF, WB
CD22	Mouse	Cy34.1	FC, IP
CD24	Mouse	R7129.7	FC
CD25 (IL-2Ra)	Mouse	PC-61.5.3	FC, Depletion
CD25 (IL-2Ra)	Human	7G7B6	IP, IF
CD28	Mouse	37.51	FC, B, IP, Costim, IHC FF
CD28	Human/Monkey	CD28.2	FC, IHC FF
CD3	Human	UCHT-1 (Leu-4) (T3)	FC, Depletion
CD325	Human	8C11	FC, ICC, WB
CD38	Human	OKT-10	FC
CD3e	Mouse	145-2C11	FC, WB, IF, Depletion
CD3e	Mouse	500A2	FC, B, IHC FF
CD3e F(ab') <sub>2</sub> fragment	Mouse	145-2C11 Fab Frag.	Depletion
CD4	Mouse	GK1.5	FC, WB, Depletion
CD4	Human	OKT-4	FC, IP, Depletion
CD4	Mouse	YTS 191	FC, WB, Depletion
CD4	Human	RPA-T4	FC, IHC FF, IF, Act
CD40	Mouse	FGK4.5/FGK45	Act
CD40	Human	G28.5	FC, FA
CD44	Mouse/Human	IM7	FC, ELISA, IHC, IP, CyTOF
CD45	Human	BC8	FA

Antigen	Reactivity	Clone	Applications
CD45	Mouse	I3/2.3	FC, IHC FFPE, IHC FF
CD45R	Mouse/Human	RA3-6B2	Depletion
CD47	Human	B6H12	FC, N
CD54 (ICAM-1)	Mouse	YN1/1.7.4	N
CD54 (ICAM-1)	Mouse	BE29G1	B, IP, WB
CD54 (ICAM-1)	Human	15.2	FC, IHC FFPE, IP, WB
CD62L	Mouse	Mel-14	N
CD62L	Human	DREG56	FC, B, WB
CD64	Human	10.1	FC, IHC FF, B
CD7	Human	T3-3A1	FC, IF Staining
CD70	Mouse	TAN 1-7	FC, B, ELISA, FA, IF
CD71	Human	T56/14	FC, IHC FF, WB
CD71 (TfR1)	Mouse	R17217.1.4	FC, Depletion
CD8	Human	UCHT-4	FC, WB, FA
CD80 (B7-1)	Mouse	16-10A1	FC, B
CD86 (B7-2)	Mouse	GL-1	FC, B
CD8a	Mouse	53-6.7	FC, WB, IF, Depletion
CD8a	Mouse	2.43	WB, Depletion
CD8a	Mouse	YTS-169	WB, Depletion
CD8b (Lyt 3.2)	Mouse	53-5.8	IF, Depletion
CDCP1 (CD318)	Human/Mouse	9A2	FC
CLEC9A (CD370)	Mouse	1F6	FC
CSF1R (CD115)	Mouse	AFS98	FC, Depletion
CTLA-4 (CD152)	Mouse	UC10-4F10-11	FC, WB, N
CTLA-4 (CD152)	Mouse	9H10	WB, N
CTLA-4 (CD152)	Mouse	9D9	WB, N
Dendritic Cells	Mouse	33D1	FC, ICC, IHC FF
EGFR	Human	EGFR.1	FC, IFC, N, IP
Fibulin-4	Human	5G11	IF Microscopy, IF Staining, IFC FFPE, WB
GM-CSF	Mouse	MP1-22E9	FC, N
H-2b	Mouse	B8-24-3	FA
HD5 (Alpha Defensin-5)	Human	8C8	IHC, WB
Hepsin	Human	3H10.1	FC, ELISA
Hepsin	Human	2D5	FC, WB, ELISA
HLA-DP	Human	B7/21	FC, WB, B, IF
HLA-DQ	Human	1a3	FC, WB, B
HLA, A2	Human	BB7.6	FC
ICOS	Mouse	7E.17G9	FC, B
IFNa	Mouse	TIF-3C5	B, WB, FA
IFNAR-1	Mouse	MAR1-5A3	WB, B
IFNb	Mouse	HDb-4A7	B, WB, FA
IFNb	Mouse	MIB-5E9.1	WB, N, IP
IFNy	Mouse	H22	WB, N, IP
IFNy	Mouse	XMG1.2	FC, WB, N, ELISPOT
IFNyRa Chain (CD119)	Human	GIR-208	B, IPP, IHC
IgG Fc Specific	Human	HP6043	FC, ELISA
IgM u-Chain Specific	Human	HB57	FC, ELISA
IL-1a	Mouse	ALF-161	N
IL-1b	Mouse	B122	ELISA, N
IL-1R (CD121a)	Mouse	JAMA-147	FC, B, IP
IL-2	Mouse	S4B6-1	N
Integrin b7	Human/Mouse	FIB504	FC, WB, B, IP, CyTOF
LAG-3 (CD223)	Mouse	C9B7W	FC, WB, N
LPAM-1 (Integrin a4b7)	Mouse	DATK32	FC, N

Antigen	Reactivity	Clone	Applications
Ly6C	Mouse	7B10	WB
Ly6C	Mouse	HK1.4	FC, IHC FF, CyTOF
Ly6G	Mouse	1A8	FC, IHC FF, IHC FFPE, IF, Depletion
Ly6G/Ly6C (Gr-1)	Mouse	RB6-8C5	FC, Depletion
MHC Class I (H-2Kb)	Mouse	Y-3	FC, FA
MHC Class I (HLA-A, HLA-B, HLA-C)	Human	W6/32	FA
MHC Class I H2-Kd	Mouse	A4C8.1-Do9	FC, B
MHC Class II (HLA-DR)	Human/Monkey	L243	FC
MHC Class II (I-Ek/RT1-D)	Mouse/Rat	14-4-45 (HB32)	FC, B
NK1.1	Mouse	PK136	FC, Depletion
PD-1 (CD279)	Mouse	RMP1-14	WB, B
PD-1 (CD279)	Mouse	29F.1A12	FC, WB, B, IHC FF
PD-L1 (B7-H1)	Mouse	10F.9G2	FC, WB, IF, B, IHC FF
PD-L2 (B7-DC, CD273)	Human	3.2	WB, FA
PD-L2 (B7-DC)	Mouse	TY25	FC, B, IHC FF
RANKL (CD254)	Mouse	IK22/5	B
RNase L	Mouse	2e9	ELISA, IHC FFPE, IP, WB
TCR Vα24-Jα18 (iNKT cell)	Human	6B11	FC, WB, CyTOF
TCR γ/d	Mouse	UC7-13D5	FC, N, IP, FA
TGF-β	Mouse/Human/Rat/Monkey/ Hamster/Canine/Bovine	1D11.16.8	WB, N
Thy1 (CD90)	Mouse	HK2.1	WB, FA
Thy1 (CD90)	Mouse	T24/31	Depletion
Thy1.2 (CD90.2)	Mouse	30H12	WB, Depletion
TIM-3 (CD366)	Mouse	RMT3-23	FC, N
TNFα	Mouse/Rat/Rabbit	TN3-19.12	FC, N
TNFR2 (CD120b)	Mouse	TR75-54.7	B
VISTA	Mouse	13F3	FC
Vy2 TCR	Mouse	UC3-10A6	FC, Depletion
YB-1	Human	21A3	WB, IHC FFPE

### IFNAR-1 (Clone MAR1-5A3)

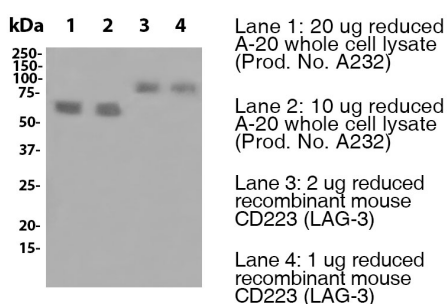


Primary: anti-mouse IFNAR-1 antibody (MAR1-5A3) at 8 ug/ml (Prod. No. I-401)

Secondary: HRP labeled goat anti-mouse at 1:1000 dilution (Prod. No. M114)

Predicted band size: 60-70 kDa

### LAG-3 (Clone C9B7W)

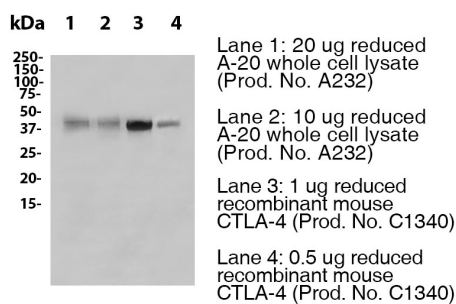


Primary: anti-mouse CD223 (LAG-3) antibody (C9B7W) at 8 ug/ml (Prod. No. L306)

Secondary: HRP labeled goat anti-rat at 1:1000 dilution (Prod. No. R1215)

Predicted band size: 70-90 kDa

### CTLA-4 (Clone 9H10)



Primary: anti-mouse CTLA-4 antibody (9H10) at 8 ug/ml (Prod. No. C1614)

Secondary: HRP labeled goat anti-syrian hamster at 1:1000 dilution (Prod. No. S221)

Predicted band size: 33-43 kDa

**Over 100 antibodies available in 1 mg, 5 mg, 25 mg, 50 mg, 100 mg sizes.**

**Bulk sizes available upon request (500 mg, 1 g + sizes).**

**Custom concentration & custom packaging available upon request!**