

# Product Datasheet

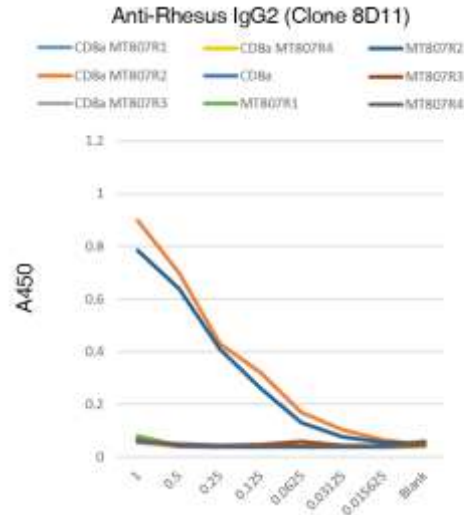
www.leinco.com



## Anti-Rhesus IgG2 (Clone 8D11) Purified Non-Human Primate Immunoglobulins

### Product Information

**Product No.:** R1500  
**Clone:** 8D11  
**RRID:** AB\_2894260  
**Isotype:** Mouse IgG  
**Storage:** Sterile 2-8°C



### Product Description

#### Specificity:

This antibody also recognizes unbound rhesus IgG2 with the same specificity. Discovery was performed using whole rhesus IgG2 molecule bound to ligand.

#### Known Reactivity Species:

Rhesus

#### Format:

Purified

#### Immunogen:

Derived from mice immunized with whole rhesus IgG2 molecule bound to its ligand.

#### Formulation

This purified antibody is formulated in 0.01 M phosphate buffered saline (150 mM NaCl) PBS pH 7.4, 1% BSA and 0.09% sodium azide as a preservative.

#### Storage and Stability

This purified antibody is stable when stored at 2-8°C. **Do not freeze.**

#### Applications

##### Applications and Recommended Usage (Quality Tested By Leinco):

**ELISA** The best practice is to titrate the antibodies under the same staining conditions you will use in your assay.

#### Country of Origin

USA

Products are for research use only. Not for use in diagnostic or therapeutic procedures.

410 Axminister Dr, St. Louis, MO 63026

(800) 538-1145

leincoglobal@leinco.com