

Product Datasheet

www.leinco.com



Anti-Rhesus IgG3 (Clone 6F5) Purified Non-Human Primate Immunoglobulins

Product Information

Product No.: R1600
Clone: 6F5
RRID: AB_2894264
Isotype: Mouse IgG
Storage: Sterile 2-8°C

Product Description

Specificity:

This antibody also recognizes unbound rhesus IgG3 with the same specificity. Discovery was performed using whole rhesus IgG3 molecule bound to ligand.

Known Reactivity Species:

Rhesus

Format:

Purified

Immunogen:

Derived from mice immunized with whole rhesus IgG3 molecule bound to its ligand.

Formulation

This purified antibody is formulated in 0.01 M phosphate buffered saline (150 mM NaCl) PBS pH 7.4, 1% BSA and 0.09% sodium azide as a preservative.

Storage and Stability

This purified antibody is stable when stored at 2-8°C. **Do not freeze.**

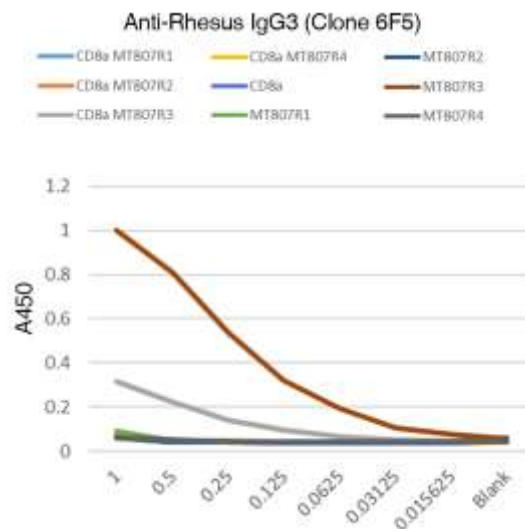
Applications

Applications and Recommended Usage (Quality Tested By Leinco):

ELISA The best practice is to titrate the antibodies under the same staining conditions you will use in your assay.

Country of Origin

USA



Products are for research use only. Not for use in diagnostic or therapeutic procedures.

410 Axminister Dr, St. Louis, MO 63026

(800) 538-1145

leincoglobal@leinco.com