

# Rhesus IgG4 Antibody

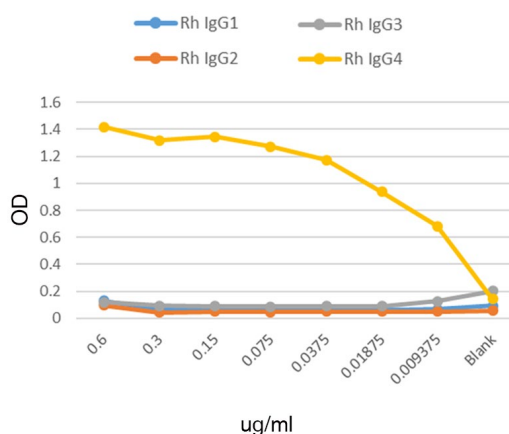
## Purified

## Non-Human Primate Immunoglobulin

### Product Information

**Product No.:** R1750  
**Clone:** 2C6  
**RRID:** AB\_2894272  
**Isotype:** Mouse Mouse IgG1  $\kappa$   
**Storage:** Sterile 2-8°C

Anti-Rhesus IgG4 (Clone 2C6) vs. Antigen Bound IgG



## Product Description

### Specificity:

This antibody also recognizes unbound rhesus IgG4 with the same specificity. Discovery was performed using whole rhesus IgG4 molecule bound to ligand.

### Known Reactivity Species:

Rhesus

### Format:

Purified

### Immunogen:

Whole rhesus IgG4 molecule bound to its ligand.

## Formulation

This purified antibody is formulated in 0.01 M phosphate buffered saline (150 mM NaCl) PBS pH 7.4, 1% BSA and 0.09% sodium azide as a preservative.

## Storage and Stability

This purified antibody is stable when stored at 2-8°C. Do not freeze.

## Applications

### Applications and Recommended Usage (Quality Tested By Leinco):

ELISA The best practice is to titrate the antibodies under the same staining conditions you will use in your assay.

## Country of Origin

USA