

## Anti-Ubiquitin Monoclonal Antibody

### ORDERING INFORMATION

**Catalog No.:** 11023 (clone 5B9.B3)

**Format:** 100 µg in PBS, pH 7.4, purified by Protein G affinity chromatography.

### BACKGROUND

Ubiquitin, a small protein comprised of 76 amino acids with a molecular mass of approximately 10kDa, is highly conserved among eukaryotic species. The primary role of ubiquitin is to clear abnormal, foreign, and improperly folded proteins by targeting them for degradation by the 26S proteasome. Ubiquitination of proteins is an essential process that is regulated by ubiquitin-activating enzymes, ubiquitin-conjugating enzymes, and ubiquitin-protein ligases. Ubiquitination also occurs in the internalization and degradation of plasma membrane proteins.

### SPECIFICATION SUMMARY

**Antigen:** Native bovine ubiquitin conjugated to KLH

**Host Species:** Mouse

**Antibody Class:** IgG2a

**Accession no.:** NP\_776558.1

**Gene ID:** 281370

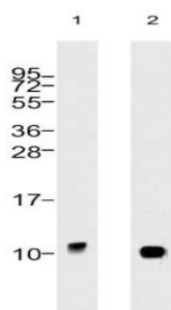
### SPECIFICITY

This antibody recognizes human, mouse, rat, and bovine ubiquitin. Other species have not been investigated.

### APPLICATIONS

*Immunoblotting:* use at 1ug/ml.

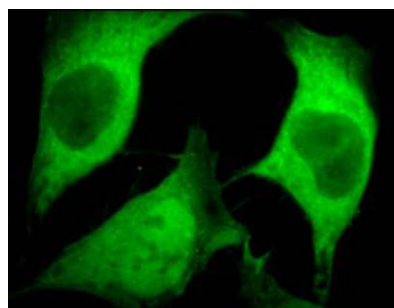
A band of ~10kDa is detected.



(1) HeLa whole cell lysate, (2) Jurkat whole cell lysate.

*ELISA:* use at 1ug/ml with ubiquitin on the solid phase.

*Immunofluorescence:* use at 10ug/ml.



2% formaldehyde-fixed HeLa cells, 100X magnification.

These are recommended concentrations. Enduser should determine optimal concentrations for their applications.

### DILUTION INSTRUCTIONS

Dilute in PBS or medium that is identical to that used in the assay system.

### STORAGE AND STABILITY

This antibody is stable for at least one (1) year at -20°C. Avoid repeated freezing and thawing.

*Products are for research use only. Not for use in diagnostic or therapeutic procedures.*

QED Bioscience, Inc. 410 Axminister Dr, St. Louis, MO 63026

Phone: (800) 538-1145

Email: leincoglobal@leinco.com