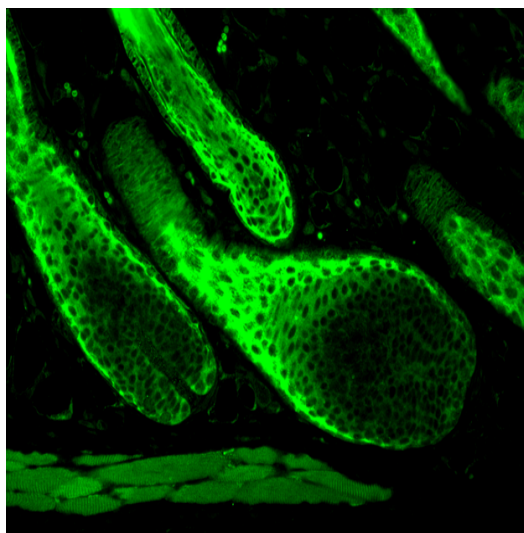
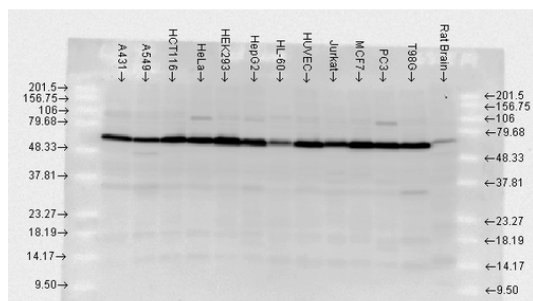
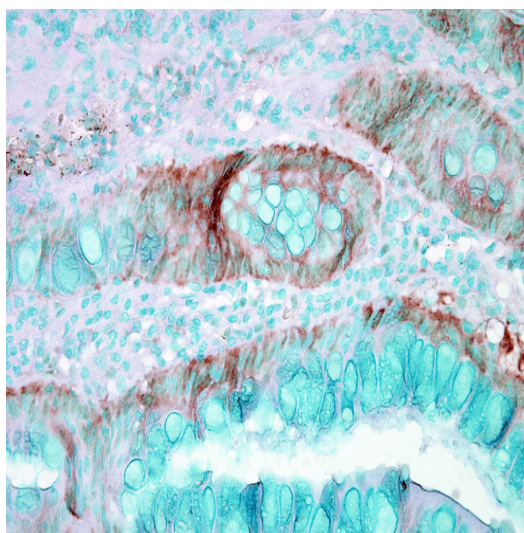
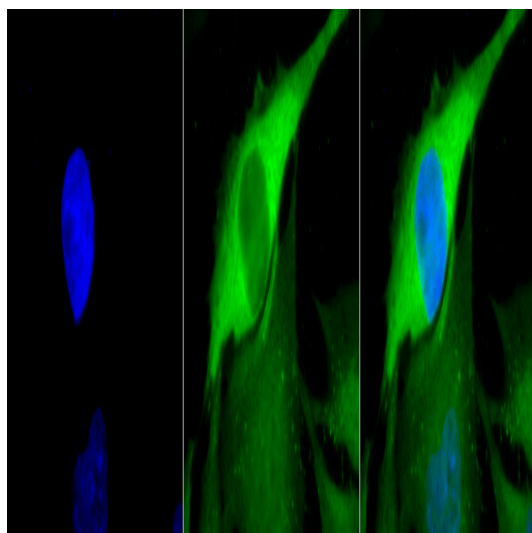


# Anti-Hsp70 Antibody

## Monoclonal Antibody

### Product Information

**Product No.:** 11108  
**Clone:** Polyclonal  
**Storage:** -20°C



Products are for research use only. Not for use in diagnostic or therapeutic procedures.

410 Axminister Dr, St. Louis, MO 63026

(800) 538-1145

leinco@leinco.com

## **Product Description**

### **Specificity:**

This antibody recognizes human, mouse, rat, beluga, bovine, canine, fish, guinea pig, hamster, monkey, porcine, ovine, and coral Hsp70.

### **Background:**

Hsp70 binds ATP with high affinity and possesses a weak ATPase activity which can be stimulated by binding to unfolded proteins and synthetic peptides. Hsp70 recognizes and binds to nascent polypeptide chains as well as partially folded intermediates of proteins preventing their aggregation and misfolding. The binding of ATP triggers a critical conformational change leading to the release of the bound protein. The ability of Hsp70 to undergo cycles of binding and release from hydrophobic stretches of partially unfolded proteins is the basis for their role in a variety of intracellular functions such as protein synthesis, protein folding and oligomerization and protein transport.

### **Known Reactivity Species:**

Beluga, Bovine, Canine, Coral, Fish, Guinea Pig, Hamster, Human, Monkey, Mouse, Ovine, Porcine, Rat

### **Format:**

Whole Antiserum

### **Immunogen:**

Full-length Hsp70 protein.

### **Formulation**

Whole antiserum

### **Storage and Stability**

This antibody is stable for at least one (1) year at -20°C.

### **Product Preparation**

Whole antiserum

### **Applications**

#### **Applications and Recommended Usage (Quality Tested By Leinco):**

Immunoblotting: use at 1:10,000- 1:25,000 (ECL). A band of ~70 kDa is detected.

Immunoprecipitation: use at 1:100 dilution

Positive control: HeLa cell lysate.

### **Country of Origin**

USA