

C-Myc Affinity-Purified Polyclonal Antibody

ORDERING INFORMATION

| Catalog No. | Size |
|-------------|--------|
| 18824 | 100 µg |

Format: 1mg/ml in Phosphate Buffered Saline, pH 7.2, 0.09% sodium azide.

BACKGROUND

c-myc is an epitope tag often constructed on the N- or C-terminus of a protein to allow for detection and analysis of the protein. The peptide sequence of the myc tag is EQKLISEEDL (Glu-Gln-Lys-Leu-Ile-Ser-Glu-Glu-Asp-Leu). The c-myc tag is approximately 1202 Daltons in atomic mass and includes 10 amino acids.

SPECIFICATION SUMMARY

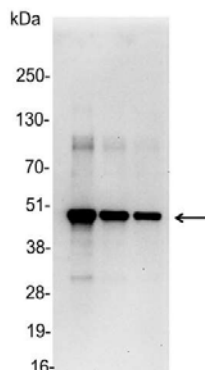
Antigen: Amino acids 410-419 (EQKLISEEDL) of human myc conjugated to KLH.

Host Species: Goat

Specificity: Antibody was affinity-purified on the peptide.

APPLICATIONS

Immunoblotting: use at a dilution of 1:1,000-1:20,000.



Detection of c-myc-tagged protein in 200, 100, and 50ng of E. coli lysate containing tagged fusion protein with #18824 diluted 1:25,000.

Immunocytochemistry: use at a dilution of 1:100-1:400.

ELISA: for detection use at a dilution of 1:1,000-1:30,000; for coating use at a dilution of 1:100-1:500.

Immunoprecipitation: use at 1-4ug/mg lysate.

These are recommended dilutions. Endusers should determine optimal dilutions for their applications.

DILUTION INSTRUCTIONS

Dilute in PBS or medium that is identical to that used in the assay system.

STORAGE AND STABILITY

This antibody is stable for at least one (1) year at 2-8°C.