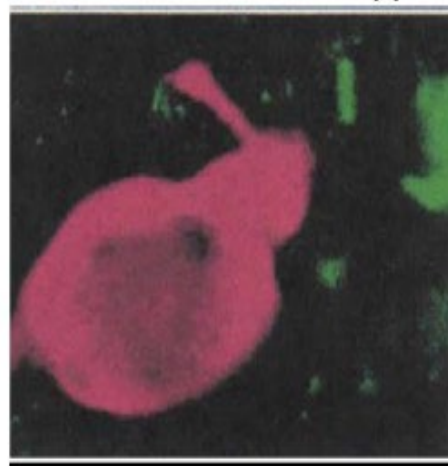


Gonadotropin Releasing Hormone (GnRH) Antibody

Monoclonal Antibody

Product Information

Product No.: 19304
Clone: LHRH13-426.12
Isotype: Mouse IgG1
Storage: -20° to -70°C



Product Description

Specificity:

This antibody recognizes human GnRH.

Background:

Gonadotropin-releasing hormone (GnRH), also known as luteinizing hormone-releasing hormone (LHRH), is a 10 amino acid neurohormone produced in the hypothalamus. GnRH stimulates the synthesis and secretion of the two gonadotropins—luteinizing hormone (LH) and follicle stimulating hormone (FSH)—by the anterior pituitary gland. Characteristic of all releasing hormones, and most striking in the case of GnRH, is the phenomenon of pulsatile secretion. Under normal circumstances, GnRH is released in pulses at intervals of about 90 to 120 minutes. Abnormalities in the pulsatile secretion of GnRH result in subnormal fertility and abnormal or absent menstruation. Constant administration of GnRH suppresses gonadotropin secretion, which has therapeutic benefits in certain patients, such as children with precocious puberty and men with prostate cancer.

Known Reactivity Species:

Human

Format:

Purified

Immunogen:

Purified human GnRh

Formulation

This monoclonal antibody is formulated in phosphate buffered saline (PBS) pH 7.2 - 7.4 with no carrier protein or preservatives added.

Storage and Stability

Upon initial thawing, appropriately aliquot and store at -20°C to -70°C. For long-term storage, keep at -80°C.

Avoid repeated freeze-thaw cycles.

Product Preparation

Antibodies are purified by a multi-step process including the use of protein A or G to assure extremely low levels of endotoxins, leachable protein A or aggregates.

Applications

Applications and Recommended Usage (Quality Tested By Leinco):

These antibodies have been qualified for use in ELISA, immunohistochemistry, and RIA to detect human GnRH.

End users should determine optimal concentrations for their applications. RIA

Country of Origin

USA

Products are for research use only. Not for use in diagnostic or therapeutic procedures.

410 Axminster Dr, St. Louis, MO 63026

(800) 538-1145

leincoglobal@leinco.com