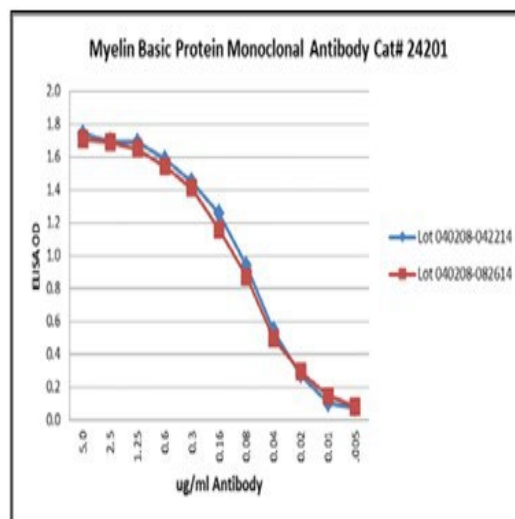


# Myelin Basic Protein Antibody

## Monoclonal Antibody

### Product Information

**Product No.:** 24201  
**Clone:** MBP101  
**Isotype:** Mouse IgG2b  
**Storage:** -20° to -70°C



## Product Description

### Specificity:

This antibody reacts with residues 130-136 in human myelin basic protein (21.5kDa and 18.5kDa molecular forms). It also recognizes primate, rabbit, sheep, goat, rat, and mouse myelin basic protein.

### Known Reactivity Species:

Goat, Human, Mouse, Primate, Rabbit, Rat, Sheep

### Format:

Purified

### Immunogen:

Purified human myelin basic protein.

### Formulation

PBS, pH 7.4.

### Storage and Stability

This antibody is stable for at least one (1) year at -20°C to -70°C.

**Avoid multiple freeze-thaw cycles.**

### Product Preparation

Purified by Protein G affinity chromatography

### Applications

#### Applications and Recommended Usage (Quality Tested By Leinco):

This antibody may be used in ELISA, immunohistochemistry, and Western blot procedures for detection and/or quantitation of myelin basic protein. ELISA: Human myelin basic protein coated on ELISA wells at 5ug/ml; binding detected with HRP-conjugated goat anti-mouse IgG + ABTS substrate.

### Country of Origin

USA