

## Mre11 Monoclonal Antibody

### ORDERING INFORMATION

Catalog No.	Clone No.	MAb Subtype	Size
56211	12D7	IgG1	100µl

**Format:** Protein G-purified antibody in PBS, pH 7.4. Concentration is lot-specific; please refer to the vial label.

### BACKGROUND

Meiotic recombination 11 (Mre11), a human ortholog of Mre11A, plays an important role in repairing damaged DNA by cleaving broken ends and by providing a platform for other DNA repair proteins. During DNA double-strand break (DSB) repair, Mre11 participates in the amplification of apoptosis signaling if irreversible damage appears. Similarly, programmed DSB is required to initiate homologous recombination during the meiosis process in which MRE11 serves an essential role for DSB repair. Various Mre11 mutations have been identified in several types of cancer.

### SPECIFICATION SUMMARY

**Antigen:** GST fusion protein corresponding to aa 182-582 of human Mre11 expressed in *E. coli*.

**Host Species:** Mouse

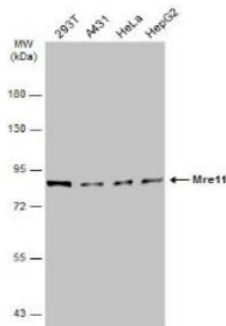
**Gene ID:** 4361

**Accession No.:** P49959

**Specificity:** This antibody recognizes human, mouse, and rat Mre11.

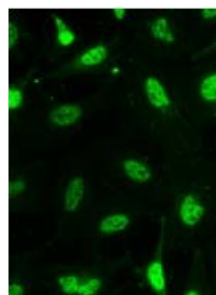
### APPLICATIONS

**Immunoblotting:** Use at 0.5-2ug/ml. A band of ~80kDa is detected.



Detection of Mre11 in 30ug of whole cell extracts.

**Immunofluorescence:** use at 1-5ug/ml.



Detection of Mre11 in HeLa cells fixed in 4% paraformaldehyde for 15 minutes.

These are recommended concentrations. Endusers should determine optimal concentrations for their applications.

### STORAGE AND STABILITY

This antibody is stable for at least one (1) year at -20°C to -70°C. Store as concentrated solution in appropriate aliquots to avoid multiple freeze-thaw cycles.