

Anti-Delta GABA-A Receptor Monoclonal Antibody

ORDERING INFORMATION

Catalog No.: 56462 (clone S151-3)
Size: 100ug in PBS, pH 7.4; 50% glycerol, 0.09% sodium azide. Purified by Protein G affinity chromatography.

BACKGROUND

GABA is the major inhibitory neurotransmitter in the vertebrate brain. GABA receptors consist of five subunits that form a chloride ion channel. Subunit families α , β , γ , and δ have been studied extensively; π and ϵ have been identified recently. Studies of recombinant GABA receptors have shown that individual subunits and their subtypes confer different sensitivities to GABA receptor modulators. Subunit subtypes are differentially expressed throughout development and in different CNS regions, reducing the total number of possible isoforms that can be formed in different brain regions and in individual cells.

SPECIFICATION SUMMARY

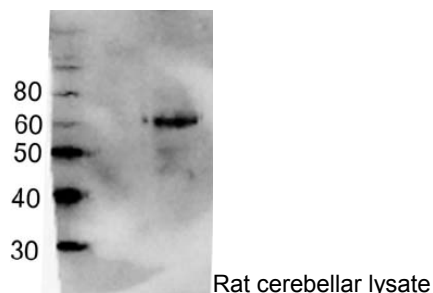
Antigen: Synthetic peptide corresponding to aa 15-34 of rat Delta GABA-A receptor (accession no. P18506).
Host Species: Mouse
Antibody Class: IgG2a

SPECIFICITY

This antibody recognizes mouse and rat Delta GABA-A receptor.

APPLICATIONS

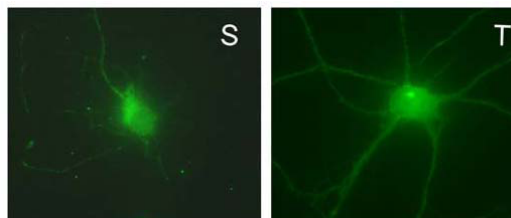
Immunoblotting: use at 1-10ug/ml. A band of ~55kDa is detected.



Immunohistochemistry and

Immunocytochemistry: use at 0.1-1ug/ml

Immunofluorescence: use at 1-10ug/ml



Rat hippocampal neuron surface (S) and total (T) protein immunofluorescent staining.

These are recommended concentrations.

User should determine optimal concentrations for their application.

Positive control: Rat brain.

DILUTION INSTRUCTIONS

Dilute in PBS or medium which is identical to that used in the assay system.

STORAGE AND STABILITY

This antibody is stable for at least one (1) year at -20°C. Avoid repeated freezing and thawing.