

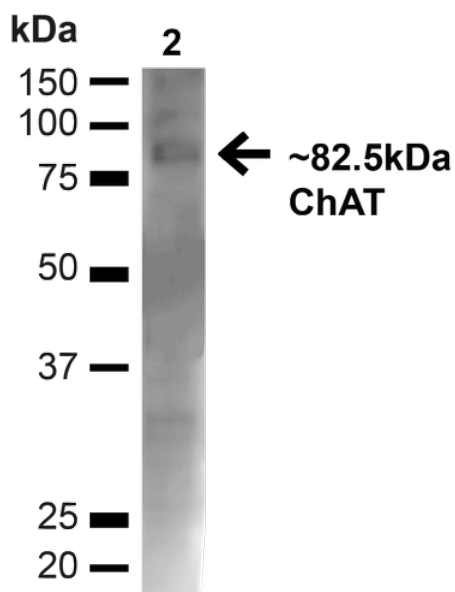
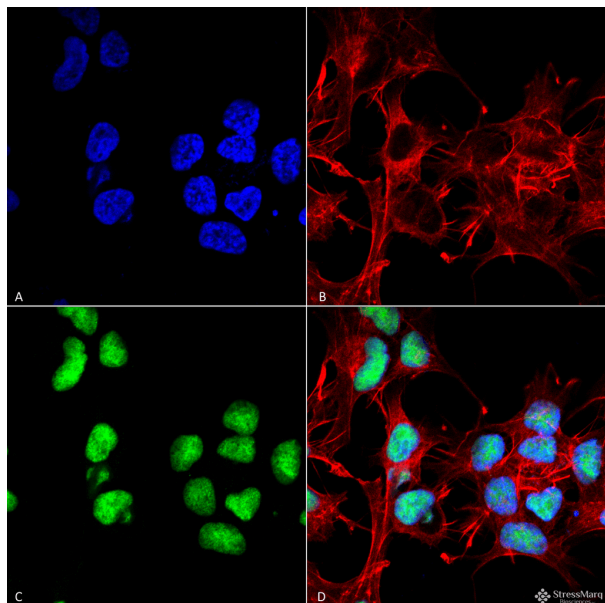
# Choline Acetyltransferase Antibody

## Polyclonal Antibody

### Product Information

**Product No.:** 56571

**Storage:** -20°C



## Product Description

### Specificity:

This antibody recognizes human and mouse choline acetyltransferase.

### Background:

Choline acetyltransferase (ChAT) catalyzes the transfer of an acetyl group from acetyl-CoA to choline to produce acetylcholine. ChAT is found in high concentration in the central nervous system and peripheral nervous system. Alterations in concentrations of acetylcholine and ChAT have been associated with Alzheimer disease and Amyotrophic Lateral Sclerosis (ALS).

### Known Reactivity Species:

Human, Mouse

### Format:

Purified

### Immunogen:

Synthetic peptide corresponding to amino acids from the N-terminus to the mid-protein of human choline o-acetyltransferase.

### Formulation

PBS, pH 7.4, 50% glycerol, 0.09% sodium azide.

### Storage and Stability

This antibody is stable for at least one (1) year at -20°C.

### Product Preparation

Purified by peptide immuno-affinity chromatography

## **Applications**

### **Applications and Recommended Usage (Quality Tested By Leinco):**

Immunoblotting: use at dilution of 1:1,000. A band of ~80kDa is detected.

Immunofluorescence: use at dilution of 1:100. Detection of choline acetyltransferase in mouse brain lysate with #56571 diluted 1:1,000

These are recommended working dilutions.

End users should determine optimal dilutions for their applications.

## **Country of Origin**

USA