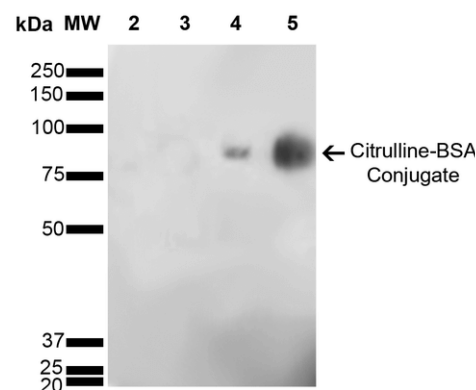
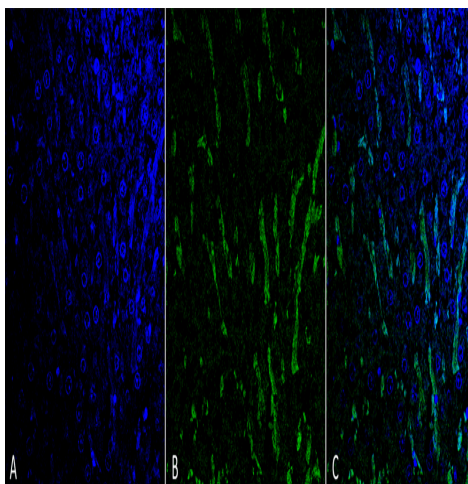
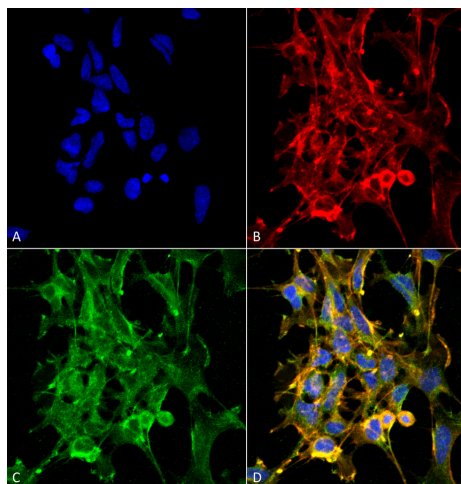


Citrulline Antibody

Monoclonal Antibody

Product Information

Product No.: 56602
Clone: 6C2.1
Isotype: Mouse IgG1
Storage: -20°C



Product Description

Specificity:

Specific for citrulline residues on modified proteins. Tested using citrulline conjugated Bovine Serum Albumin (BSA).

Known Reactivity Species:

Species Independent

Format:

Purified

Immunogen:

Synthetic L-Citrulline conjugated to Keyhole Limpet Hemocyanin (KLH).

Formulation

PBS pH 7.4, 50% glycerol, 0.09% Sodium azide

Storage and Stability

This antibody is stable for at least one (1) year at -20°C.

Avoid multiple freeze-thaw cycles.

Product Preparation

Protein G Purified

Applications

Applications and Recommended Usage (Quality Tested By Leinco):

WB (1:1000); ICC/IF (1:50); ELISA (1:1000); IHC: (1:25)

Optimal dilutions for assays should be determined by the user.

Country of Origin

USA