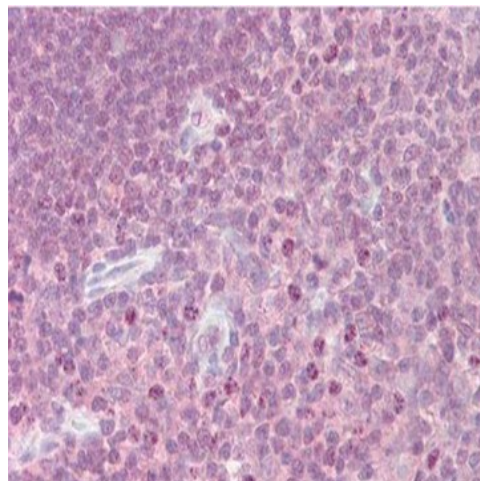


Cytokine Receptor-Like Factor 2 Antibody

Monoclonal Antibody

Product Information

Product No.: 90011
Clone: 8H8
Isotype: Mouse IgG1
Storage: -20°C



Product Description

Specificity:

Mouse Monoclonal Antibody specific to Cytokine Receptor-Like Factor 2

Background:

Cytokine Receptor-like Factor 2, also known as thymic stromal lymphopoietin protein receptor (TSLPR), is the product of the CRLF2 gene. The protein encoded by this gene is a receptor for thymic stromal lymphopoietin (TSLP). Together with the interleukin 7 receptor (IL7R), the encoded protein and TSLP activate STAT3, STAT5, and JAK2 pathways, which control processes such as cell proliferation and development of the hematopoietic system. Two transcript variants encoding different isoforms have been found for this gene.

Known Reactivity Species:

Human

Format:

Purified

Immunogen:

Recombinant human TSLPR- Fc fusion protein. Accession no. Q9HC73.

Formulation

Lyophilized, 0.1M Tris, 0.1M glycine, 2% sucrose, 1mg/ml.

Storage and Stability

This product is stable for at least two (2) years at -20°C.

Reconstituted product should be stored in appropriate aliquots to avoid repeated freeze-thaw cycles.

Product Preparation

Purified by Protein A affinity chromatography

Applications

Applications and Recommended Usage (Quality Tested By Leinco):

ELISA: use at 0.05-0.10ug/ml.

Immunoblotting: use at 0.5-1ug/ml. A band of ~42kDa is detected.

Immunohistochemistry: Formalin-fixed, paraffin-embedded tissue. Use at 1- 10ug/ml.

These are recommended concentrations.

End user should determine optimal concentrations for their applications.

Country of Origin

USA