

Sphingosine kinase type 1 Polyclonal Antibody

ORDERING INFORMATION

Catalog No.: 13810

Size: 50ug peptide immunogen affinity purified antibody in PBS containing 0.1% sodium azide.

BACKGROUND

Sphingosine kinase (SPHK) phosphorylates sphingosine to form a bioactive lipid, sphingosine 1-phosphate (S1P). S1P is a novel lipid messenger with both intracellular and extracellular functions. Intracellularly, it regulates proliferation and survival while extracellularly it is a ligand for endothelial differentiation gene 1 (EDG1). Expression of SPHK1 and subsequent production of S1P promotes the G1-S transition, protects cells from apoptosis, stimulates migration and angiogenesis, and induces tumor formation in mice.

SPECIFICATION SUMMARY

Antigen: Synthetic peptide conjugated to KLH.

Host Species: Rabbit

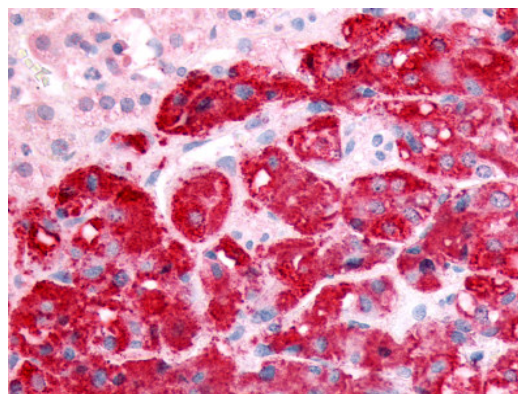
Preservatives: 0.1% sodium azide

SPECIFICITY

This antibody recognizes an epitope within the N-terminal domain of human SPHK1.

APPLICATIONS

Immunohistochemistry: Use at 10ug/ml.



Adrenal, pheochromocytoma: Formalin-fixed, paraffin-embedded

DILUTION INSTRUCTIONS

Dilute in PBS or medium which is identical to that used in the assay system.

STORAGE AND STABILITY

This antibody is stable at 4°C (short-term) and -70°C (long-term).

For in vitro investigational use only. Not for use in therapeutic or diagnostic procedures.