

GPX7 Monoclonal Antibody

ORDERING INFORMATION

Catalog no.	Clone No.	MAb Subtype	Size
13911	2704	IgG2a	100ug

Format: Protein G-purified antibody in PBS, pH 7.2.

BACKGROUND

Glutathione peroxidases (GPXs) are some of the most important enzymes involved in removing reactive oxygen species (ROS). GPX7 (along with GPX5 and GPX8) is a non-selenocysteine glutathione peroxidase. When cells are exposed to oxidative stress, GPX7 acts as an intracellular sensor that detects redox level and transmits ROS signals to redox-sensitive, thiol-containing proteins to facilitate the regulation of multiple biologic processes such as protein folding and releasing non-targeting short interfering RNAs (siRNAs)-associated stress.

SPECIFICATION SUMMARY

Antigen: Full-length human GPX7.

Gene ID: 2882

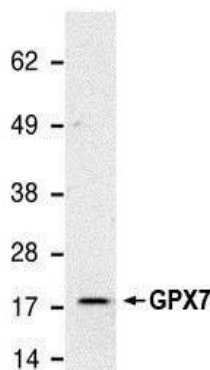
Accession no.: Q96SL4

Host Species: Mouse

Specificity: This antibody recognizes human GPX7.

APPLICATIONS

Immunoblotting: use at a 1:500-1:2,000 dilution. A band of ~18kDa is detected.



Detection of GPX7 in HeLa cell extract.

DILUTION INSTRUCTIONS

Dilute in PBS or medium that is identical to that used in the assay system.

STORAGE AND STABILITY

This product is stable for at least one (1) year if stored at -20°C. Store product in appropriate aliquots to avoid multiple freeze-thaw cycles.

For in vitro investigational use only. Not intended for therapeutic or diagnostic applications.