

RbAp48 Monoclonal Antibody

ORDERING INFORMATION

Catalog no.: 3111

Format: 100ug Protein G-purified antibody in PBS, pH 7.4.

BACKGROUND

RbAp48, product of the *RBBP4* gene in humans, is a 48 kDa nuclear protein that was first identified through its interaction with the carboxyl-terminus of retinoblastoma protein (Rb). In mice, the RbAp48 protein is a key component in histone acetylation, transcriptional regulation and in the cyclic adenosine monophosphate (cAMP)-protein kinase element-binding protein CREB1 path way. Since histone acetylation and the cAMP-PKA-CREB1 pathway are extremely important for normal hippocampal function, RbAp48 has been investigated to test whether decreased expression of RbAp48 in aged animals is directly associated with age-related memory loss.

SPECIFICATION SUMMARY

Antigen: The complete coding region (aa 1-425) of RbAp48 expressed in *E. coli*.

Accession no.: Q09028

Gene ID: 5928

Antibody Class: IgG2a

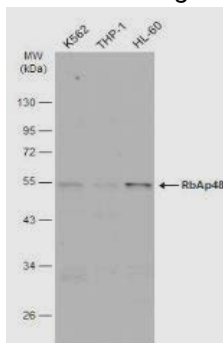
Clone no.: 15G12

Host Species: Mouse

Specificity: This antibody recognizes human and mouse RbAp48 and RbAp46.

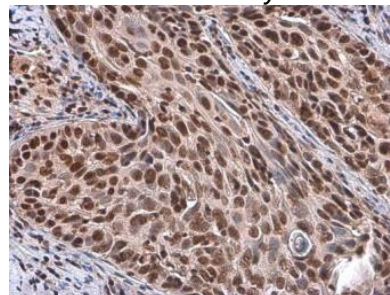
APPLICATIONS

Immunoblotting: use at 1-5ug/ml. A band of ~48kDa is detected.



Detection of RbAp48 in K562, THP-1, and HL-60 whole cell extracts (30ug), separated by 10% SDS-PAGE, with #3111 at 2ug/ml.

Immunohistochemistry: use at 5-10ug/ml.



Detection of RbAp48 in paraffin-embedded human cervical carcinoma with #3111 at 10ug/ml.

These are recommended concentrations. Endusers should determine optimal concentrations for their applications.

STORAGE AND STABILITY

This antibody is stable at -20°C for at least one (1) year; store in appropriate aliquots to avoid multiple freeze-thaw cycles.

For in vitro investigational use only. Not intended for therapeutic or diagnostic procedures.