

## Progesterone Receptor (Phospho-Ser190) Polyclonal Antibody

### ORDERING INFORMATION

**Catalog No.:** 43074

**Format:** 100ul at 1.0mg/ml in PBS (without Mg<sup>2+</sup> and Ca<sup>2+</sup>), pH 7.4, 150mM NaCl, 0.02% sodium azide and 50% glycerol. Affinity-purified on phosphopeptide; non-phosphopeptide-reactive antibodies were removed by chromatography on non-phosphorylated peptide.

### BACKGROUND

Progesterone receptor (PR) is a nuclear hormone receptor of the NR3C class which includes mineralocorticoid, glucocorticoid, and androgen receptors. They exist as homodimers coupled to Hsp90 or HMGB proteins which are shed upon activation. Progesterone receptors signal directly via DNA binding and transcriptional regulation of target genes. They can also signal by binding to other proteins with transcription factors such as NF-kappa B, AP-1, or STAT. Progesterone receptor expression is induced by estrogen, and the human gene encoding the progesterone receptor has been localized to 11q22.

### SPECIFICATION SUMMARY

**Antigen:** Peptide sequence that includes phosphorylation site of serine 190 (G-L-S(p)-P-A) derived from human progesterone receptor and conjugated to KLH.

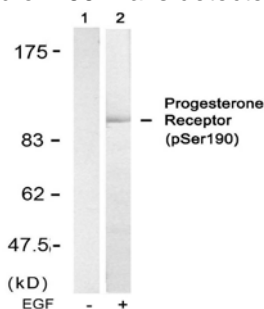
**Host Species:** Rabbit

**Specificity:** This antibody detects endogenous human progesterone receptor only when phosphorylated at serine 190.

**Accession no.:** P06401, NP\_000917.3

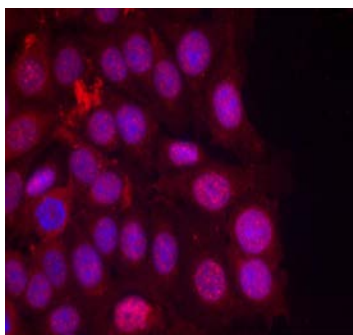
### APPLICATIONS

**Immunoblotting:** use at dilution of 1:500-1:1,000. A band of ~66kDa is detected.



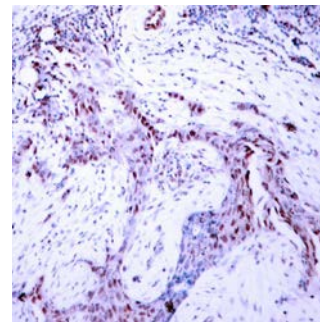
Detection of PR (phospho-Ser190) in extracts of SKOV3 cells untreated or treated with EGF.

**Immunofluorescence:** use at dilution of 1:100-1:200.



Detection of PR (phospho-Ser190) in methanol-fixed MCF-7 cells.

**Immunohistochemistry:** use at dilution of 1:50-1:100.



Detection of PR (phospho-Ser190) in paraffin-embedded human breast carcinoma tissue.

These are recommended working dilutions. Enduser should determine optimal dilutions for their applications.

### DILUTION INSTRUCTIONS

Dilute in PBS or medium that is identical to that used in the assay system.

## Progesterone Receptor (Phospho-Ser190) Polyclonal Antibody

### STORAGE AND STABILITY

This antibody is stable for at least one (1) year at -20°C. Can be stored at 4°C for short-term.

*For in vitro investigational use only. Not intended for therapeutic or diagnostic applications.*