

Otoferlin Monoclonal Antibody

ORDERING INFORMATION

Catalog No.: 90023 (clone 13A9)

Format: 100ug, Protein A-purified, lyophilized, 0.1M Tris, 0.1M glycine, 2% sucrose, 1mg/ml.

BACKGROUND

Otoferlin protein is the product of the OTOF gene. Otoferlin is present in the brain and the cochlea of the inner ear where sound is processed. Hearing relies on Ca^{2+} influx-driven exocytosis of synaptic vesicles at the ribbon-type active zones of hair cells. The presence of several C_2 domains in otoferlin, some of which bind Ca^{2+} , suggest that otoferlin is a Ca^{2+} sensor for fusion in inner hair cell (IHC) synapses.

SPECIFICATION SUMMARY

Antigen: GST fusion protein corresponding to aa 1-395 of human otoferlin (accession no. Q9HC10).

Host species: Mouse.

Antibody Class: IgG1.

Preservative: None.

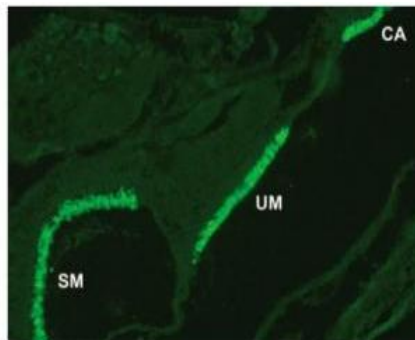
SPECIFICITY

This antibody recognizes human otoferlin.

APPLICATIONS

Immunoblotting: use at 1-5ug/ml. A band of ~220kDa is detected.

Immunofluorescence: use at 2-10ug/ml.



Otoferlin is detected in hair cells of the inner ear crista ampullaris (CA), utricular macula (UM), and saccular macula (SM) with #90023.

These are recommended concentrations. Enduser should determine optimal concentrations for their applications.

RECONSTITUTION

Reconstitute in distilled water.

STORAGE AND STABILITY

This product is stable for at least one (1) year at -20°C to -70°C . Reconstituted product should be stored in appropriate aliquots to avoid repeated freeze-thaw cycles.

For in vitro investigational use only. Not for use in therapeutic or diagnostic procedures.