

CA-125 Monoclonal Antibodies

ORDERING INFORMATION

Catalog Nos.: 3330 (clone 75), 3345 (clone 325), and 3346 (clone 306).

Format: 100ug purified antibody in 10mM Tris buffer, pH 7.5, 0.15M NaCL, 0.05% sodium azide. Purified by ion exchange chromatography.

BACKGROUND

CA-125 (cancer antigen 125, carcinoma antigen 125, or carbohydrate antigen 125) also known as mucin 16 or MUC16 is encoded by the *MUC16* gene in humans. MUC16 is a member of the mucin family of glycoproteins. CA-125 is most consistently elevated in epithelial ovarian cancer, but can be expressed in a number of gynecologic (endometrial, fallopian tube) and non-gynecologic (pancreatic, breast, colon and lung) cancers. It may also be elevated in cases of benign abnormalities such as endometriosis.

SPECIFICATION SUMMARY

Antigen: CA-125 purified from ovarian carcinoma cells.

Host Species: Mouse

Antibody Class: IgG1

Specificity: #3330 and #3345 epitope specificity group B (ISOBM* classification).
#3346 epitope specificity group A (ISOBM* classification)

*International Society of Oncology and Biomarkers

APPLICATIONS

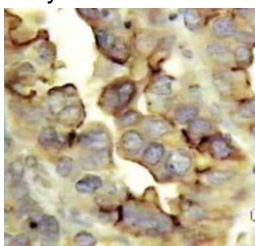
These antibodies may be used in ELISA and Western blotting to detect CA-125.

Positive control: OVCAR3 ovarian adenocarcinoma cells.

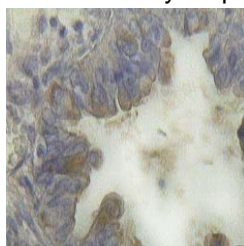
Suggested pairs for sandwich ELISA:

<u>Capture</u>	<u>Detection</u>
#3346	#3345
#3346	#3330

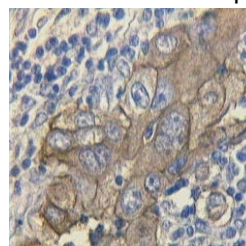
#3345 may be used in immunohistochemistry on paraffin-embedded samples.



Lung adenocarcinoma



Serosal ovarian
adenocarcinoma



Bladder adenocarcinoma

DILUTION INSTRUCTIONS

Dilute in PBS or medium that is identical to that used in the assay system.

STORAGE AND STABILITY

This antibody may be stored as received at 2-8°C.

For in vitro investigational use only. Not intended for therapeutic or diagnostic applications.